

Some differential equations and their solutions used in intro physics.

$$\frac{d^2x}{dt^2} + \omega^2 x = 0$$
$$\frac{d^2\psi}{dx^2} + [k^2] \psi = 0$$

$$\frac{df}{dt} + \frac{1}{\tau} f = 0$$

$$\frac{dN}{dt} + \lambda N = 0$$

$$\frac{dQ}{dt} + \frac{Q}{[RC]} = 0$$

Aside on solution of differential equation

Schrödinger Equation for free particle

$$\frac{p^2}{2m} \psi(x) = E \psi(x)$$

$$\frac{p^2}{2m} \psi - E\psi = 0$$

$$-\frac{\hbar^2}{2m} \frac{d^2\psi}{dx^2} - E\psi = 0$$

$$\frac{d^2\psi}{dx^2} + \left[\frac{2mE}{\hbar^2} \right] \psi = 0$$

$$k = \sqrt{\frac{2mE}{\hbar^2}} = \frac{2\pi}{\lambda}$$

$$\frac{d^2\psi}{dx^2} + [k^2] \psi = 0$$

$$\psi(x) = A \sin(kx) + B \cos(kx)$$

Newton's Equation for harmonic oscillator

$$F = ma = -kx$$

$$ma + kx = 0$$

$$a + \left[\frac{k}{m} \right] x = 0$$

$$\frac{d^2x}{dt^2} + \left[\frac{k}{m} \right] x = 0 \quad \omega = \sqrt{\frac{k}{m}}$$

$$\frac{d^2x}{dt^2} + \omega^2 x = 0$$

$$x(t) = A \sin(\omega t) + B \cos(\omega t)$$

$$\text{or } x(t) = A \sin(\omega t + \delta)$$

Exponential Function

$$f(t) = e^{-\frac{t}{\tau}}$$

τ = time constant

$$f(t=\tau) = e^{-1} = \frac{1}{e} = \frac{1}{2.732}$$

$$\frac{df}{dt} = -\frac{1}{\tau} f$$

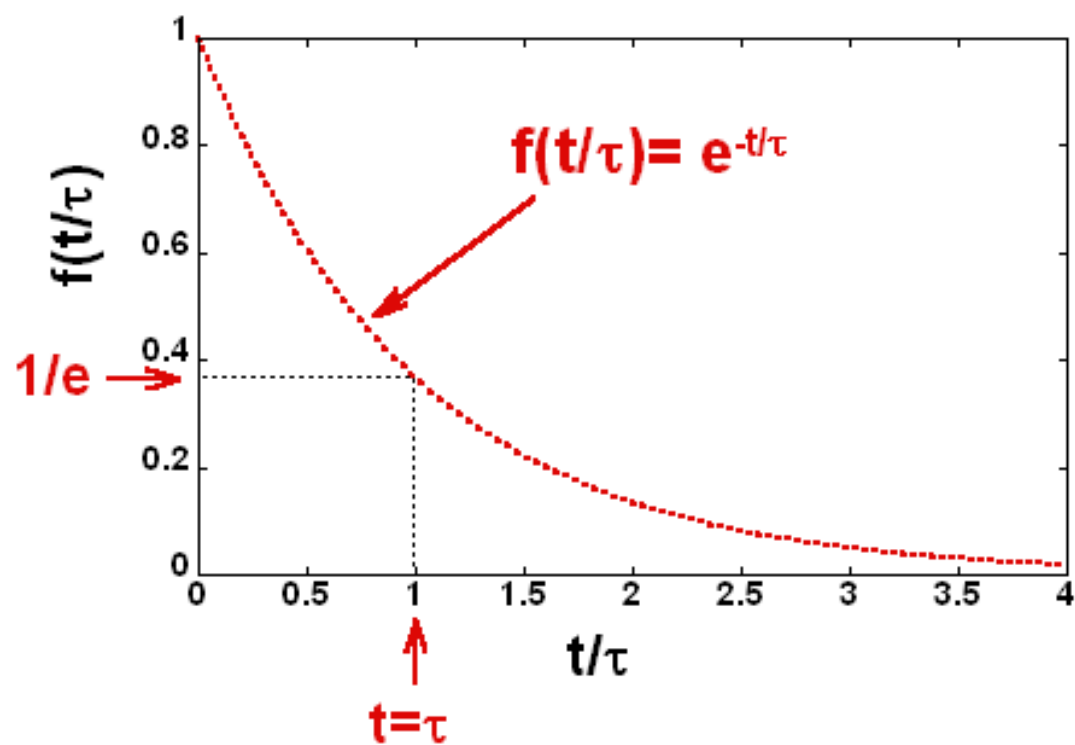
$$\frac{df}{dt} + \frac{1}{\tau} f = 0$$

$$\frac{df}{f} = -\frac{1}{\tau} dt$$

$$\int \frac{df}{f} = -\frac{1}{\tau} \int dt$$

$$\ln(f) = -\frac{t}{\tau}$$

$$f(t) = e^{-\frac{t}{\tau}}$$



or

$$\frac{\Delta f}{\Delta t} = -\frac{1}{\tau} f$$

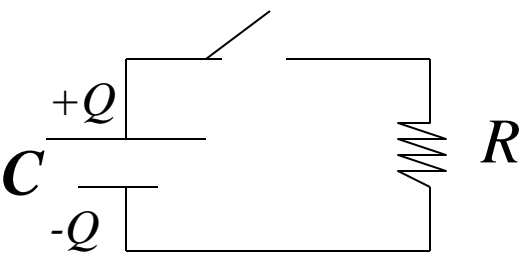
3-19

Note: gen. soln. $f(t) = f_0 e^{-\frac{t}{\tau}}$ ($f_0 = \text{constant}$)

Time varying electrical current

Example: Capacitor discharge

$t=0$ close switch



$$0 = V_c + V_R$$

$$t=0 \quad Q=Q_0$$

$$0 = \frac{Q}{C} + IR$$

$$Q \rightarrow 0$$

$$t = \infty$$

$$I = \frac{dQ}{dt}$$

$$\frac{dQ}{dt} + \frac{Q}{[RC]} = 0$$

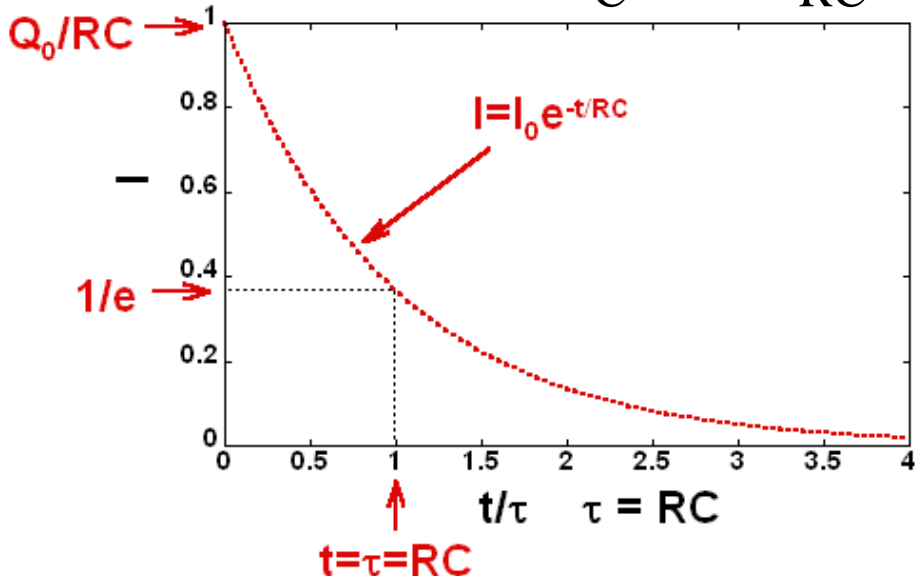
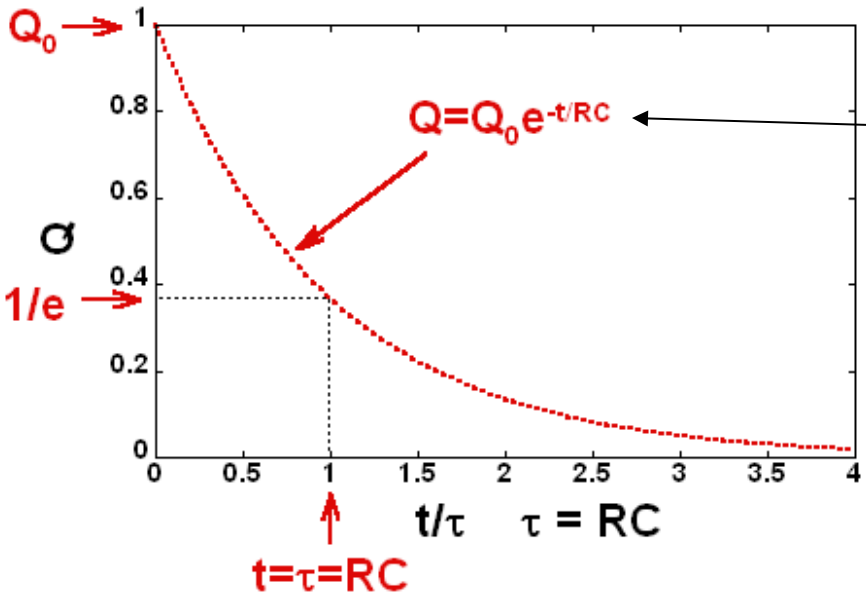
$\tau = RC = \text{time constant}$

$$Q = [?] e^{-\frac{t}{RC}}$$

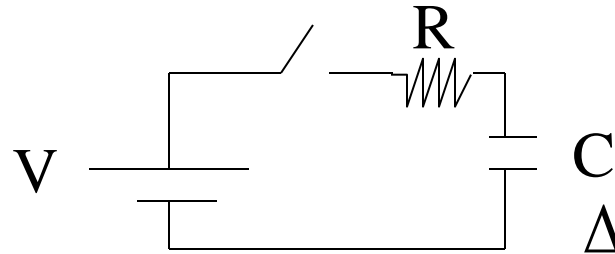
$$t=0 \quad Q=Q_0 \Rightarrow [?] = Q_0$$

$$\therefore Q = Q_0 e^{-\frac{t}{RC}}$$

Recall $IR = \frac{Q}{C} \rightarrow I = -\frac{Q}{RC}$



t=0 close switch.



Capacitor Charging

$$-V + IR + \frac{Q}{C} = 0$$

Again: $I = \frac{\Delta Q}{\Delta t}$

$$\frac{\Delta Q}{\Delta t} R + \frac{Q}{C} = V \Rightarrow \frac{\Delta Q}{\Delta t} + \frac{Q}{RC} = \frac{V}{R} \Rightarrow \frac{dQ}{dt} + \frac{Q}{RC} = \frac{V}{R}$$

Very similar to before but not identical

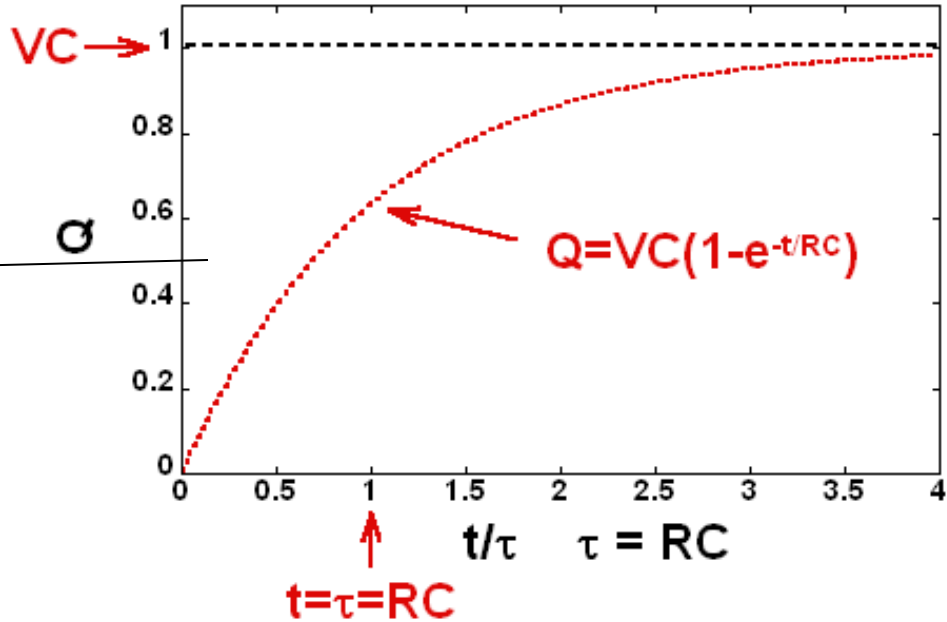
t=0 Q=0: t=∞ I=0

ie. $Q_o = VC$

$$Q = VC (1 - e^{-\frac{t}{RC}})$$

$$I = -\frac{Q}{RC} + \frac{V}{R} = -\frac{V}{R} (1 - e^{-\frac{t}{RC}}) + \frac{V}{R}$$

$$I = \frac{V}{R} e^{-\frac{t}{RC}}$$



Radioactive decay: a stochastic statistical process

-a given nuclei decays randomly and independently of others

-constant statistical decay rate (probability per unit time)

{short time compared to time when ~ nothing left)

⇒ 1) the more nuclei the more decays

2) the longer the time the more decays.

1) ⇒ N radioactive nuclei at time t , then $\Delta N \sim N$

2) ⇒ $\Delta N \sim \Delta t$

⇒ $\Delta N = -\lambda N \Delta t$

⇒ $dN = -\lambda N dt$

⇒ $\frac{dN}{dt} = -\lambda N$

⇒ $\frac{dN}{dt} + \lambda N = 0$

Have seen this before !!



Poisson process: every object has a fixed probability of decaying in a given time [Remember the Fr. mathematician Siméon Denis Poisson (1781 – 1840) who was wrong about “ Poissions’ bright spot”.]

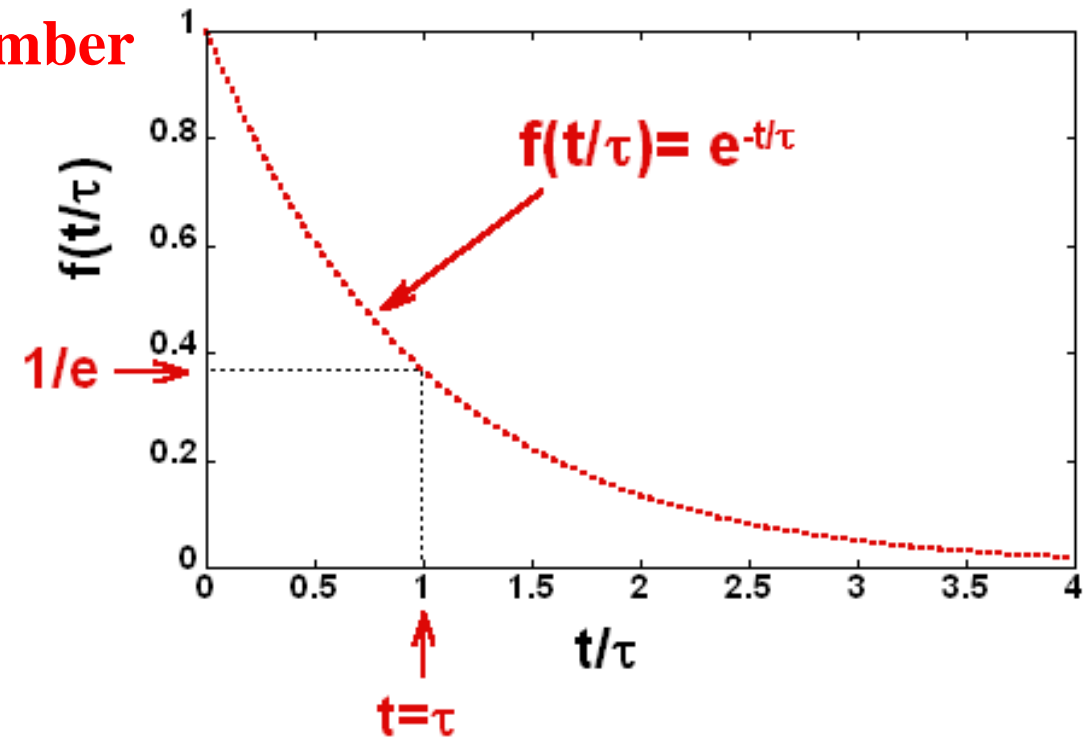
13-14a

Exponential Function **remember**

$$f(t) = e^{-\frac{t}{\tau}}$$

τ = time constant

$$f(t=\tau) = e^{-1} = \frac{1}{e} = \frac{1}{2.732}$$



$$\frac{df}{dt} = -\frac{1}{\tau} f$$

$$\frac{df}{f} = -\frac{1}{\tau} dt$$

$$\int \frac{df}{f} = -\frac{1}{\tau} \int dt$$

or

$$\frac{\Delta f}{\Delta t} = -\frac{1}{\tau} f$$

$$\ln(f) = -\frac{t}{\tau}$$

$$f(t) = e^{-\frac{t}{\tau}}$$

13-14b

Note: gen. soln. $f(t) = f_0 e^{-\frac{t}{\tau}}$ ($f_0 = \text{constant}$)