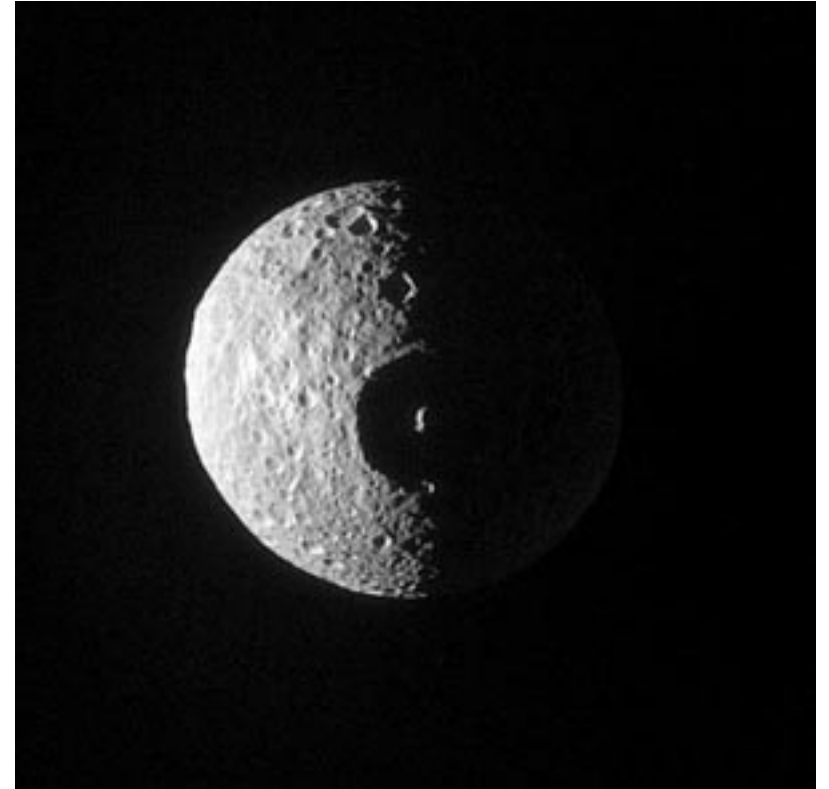
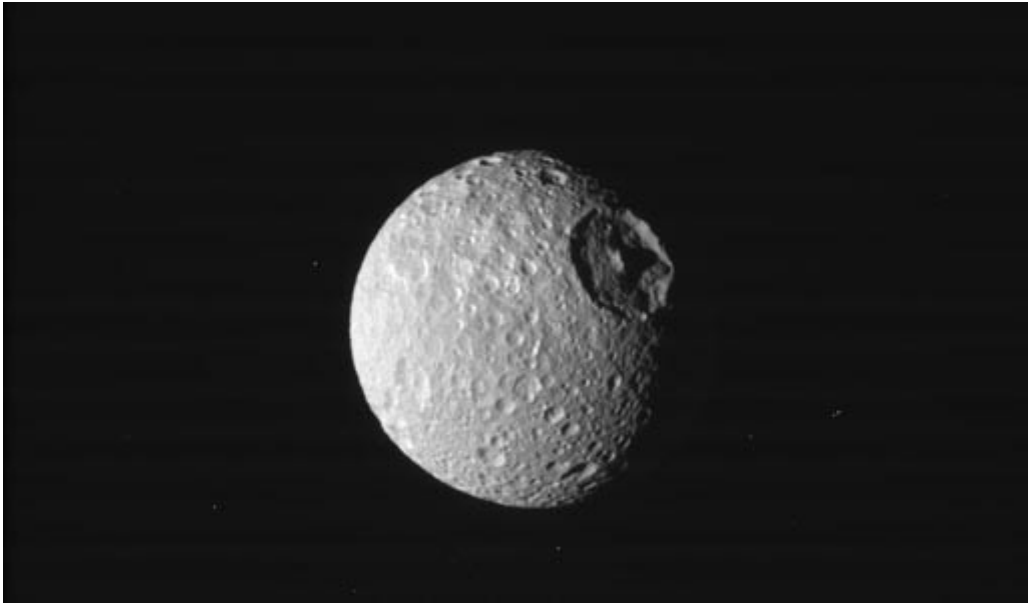


**SAS Honors Seminar 259:
Extraterrestrial Life**

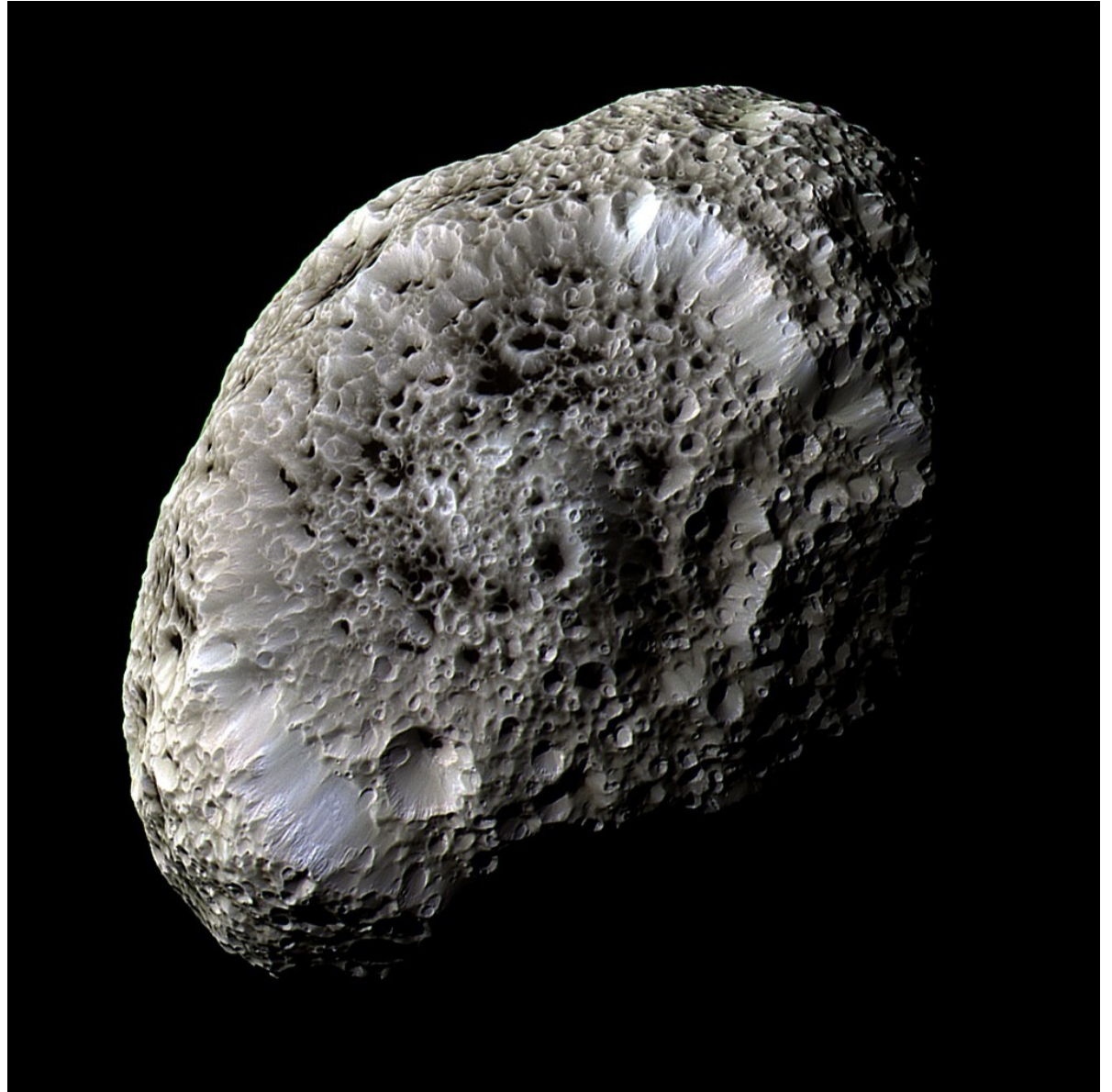
10/27/2008

Mimas (a.k.a. the “Death Star”)



NASA/Cassini (<http://saturn.jpl.nasa.gov/>)

Hyperion (a.k.a. the “sponge”)



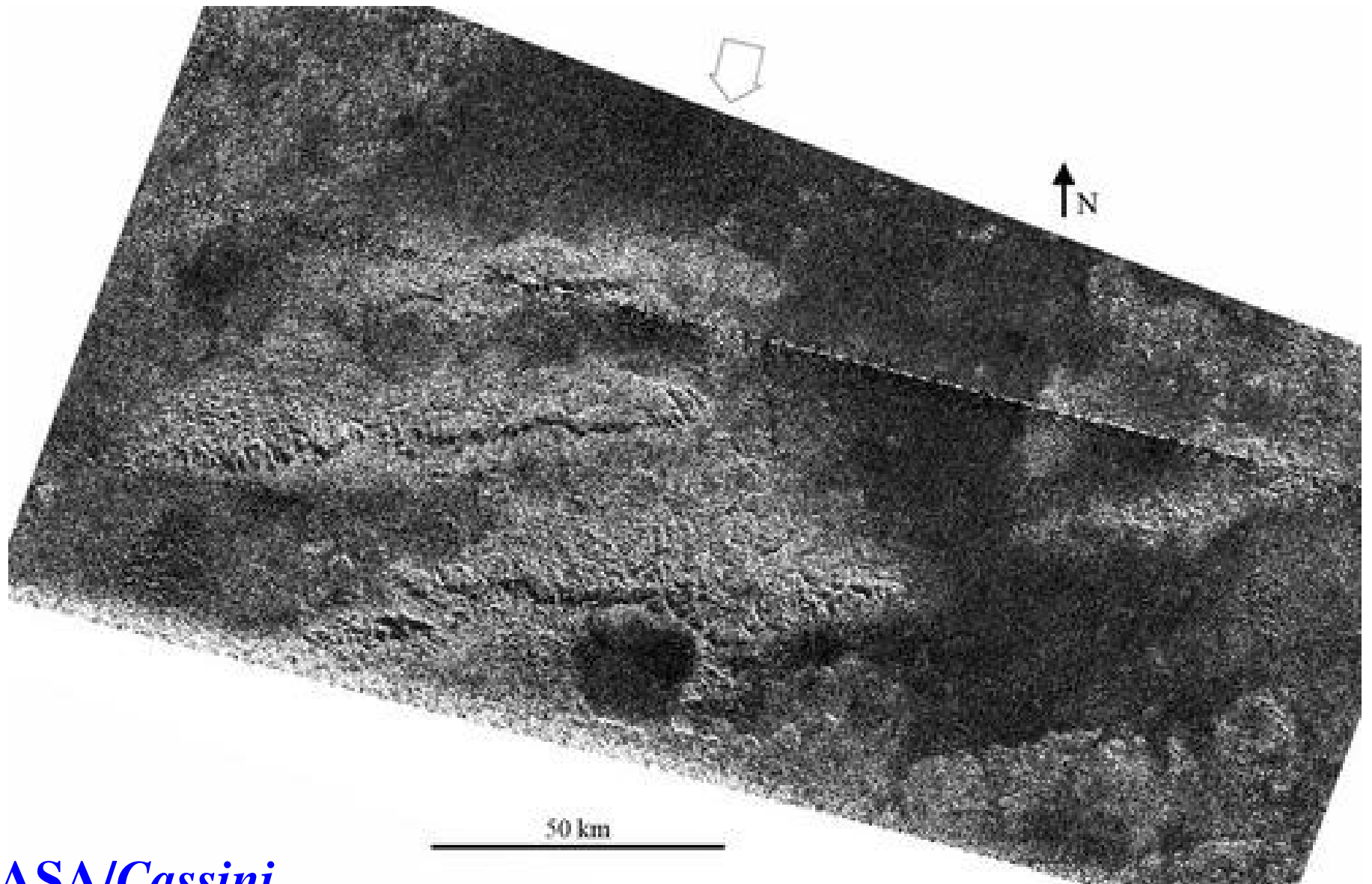
NASA/Cassini

Iapetus (a.k.a. “two-face”)

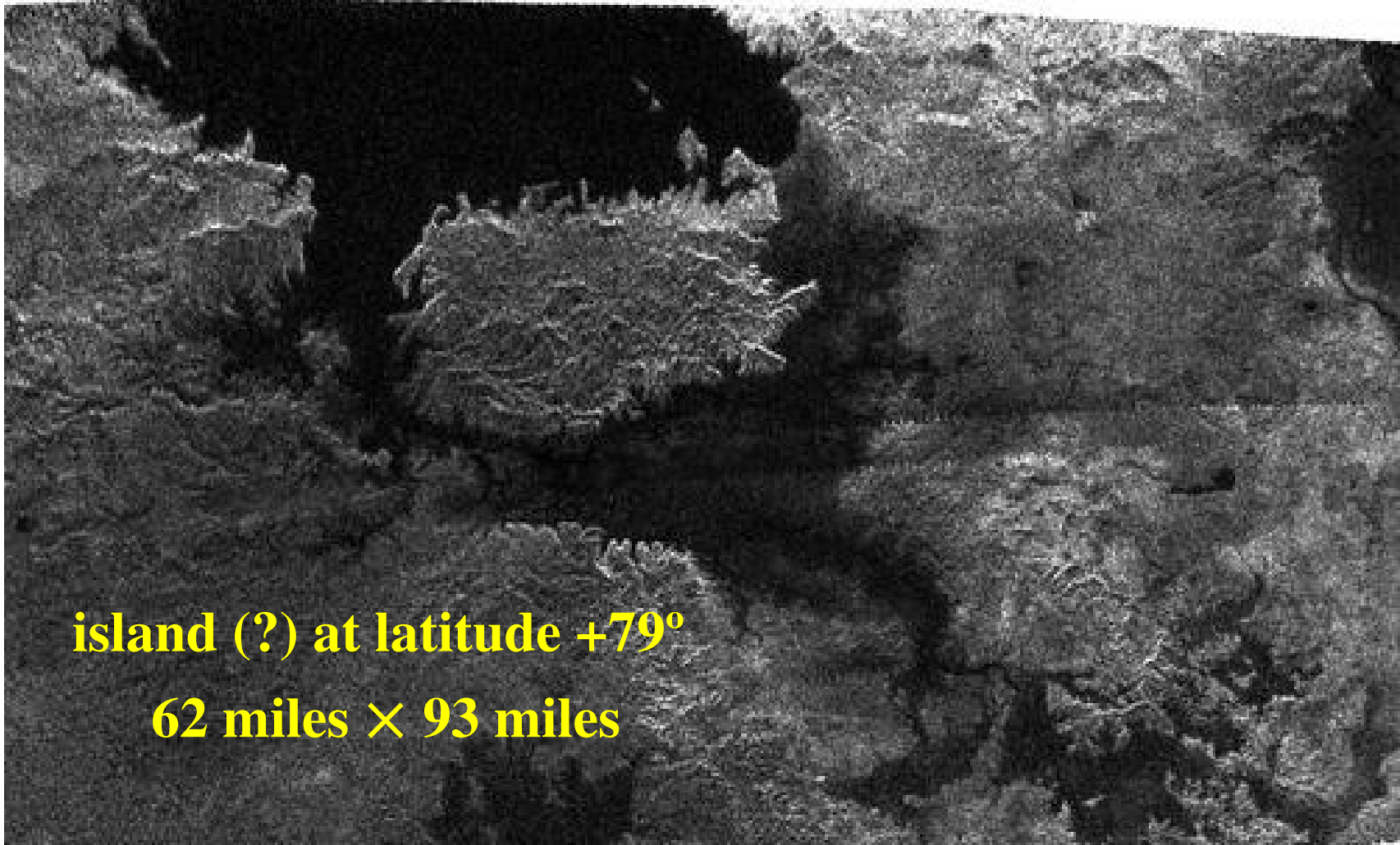


NASA/Cassini

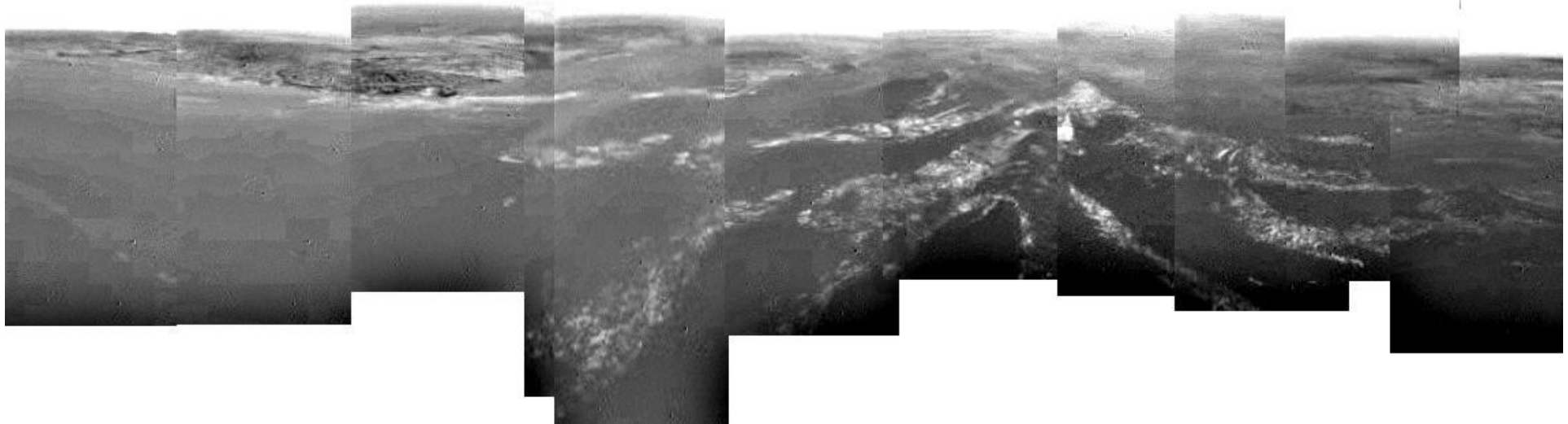
Titan: tectonics



Titan: lakefront property



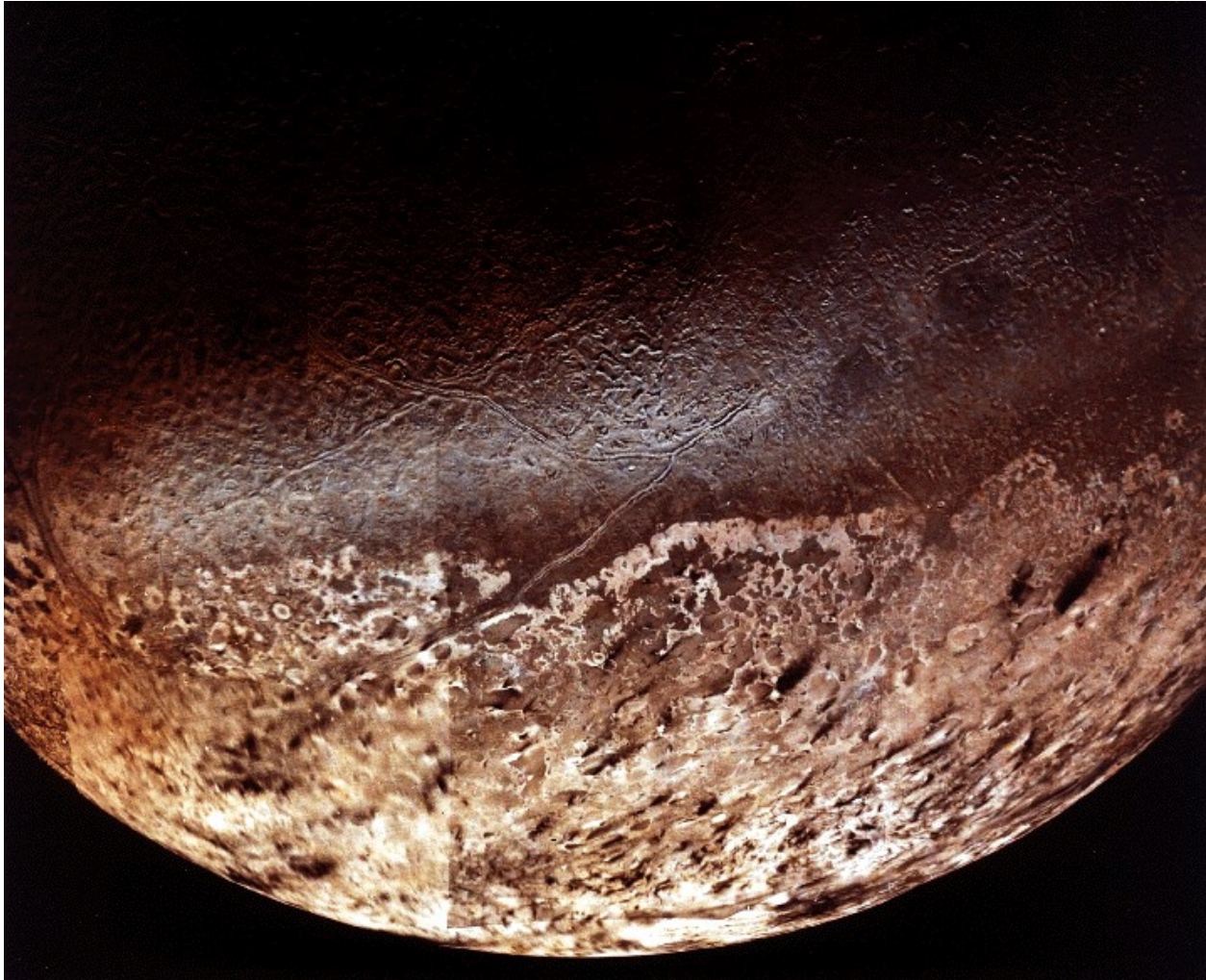
Titan: descent of *Huygens*



**360 degree panorama taken at ~8 km altitude
as *Huygens* moved towards its touchdown**

NASA/Cassini

Triton: geologically active!



**Voyager 2 images show black streaks
indicative of geyser activity**

NASA/JPL

Reading for Wednesday (10/29)

Bennett & Shostak 6.4 – background on impacts and mass extinctions

Alvarez et al. (1980) – original article proposing impact explanation for extinction of dinosaurs

Cheat sheet for Alvarez et al. up later today.

Due next Monday (11/3)

Response paper #7:
Assuming that NASA
only has enough
money to fund one
astrobiological mission
(i.e., a search for
evidence of life)
in the next ten years,
should this mission
focus on Mars,
Europa, or Titan?
Explain and justify your views.

