

**A couple of nice websites for images of HI...**

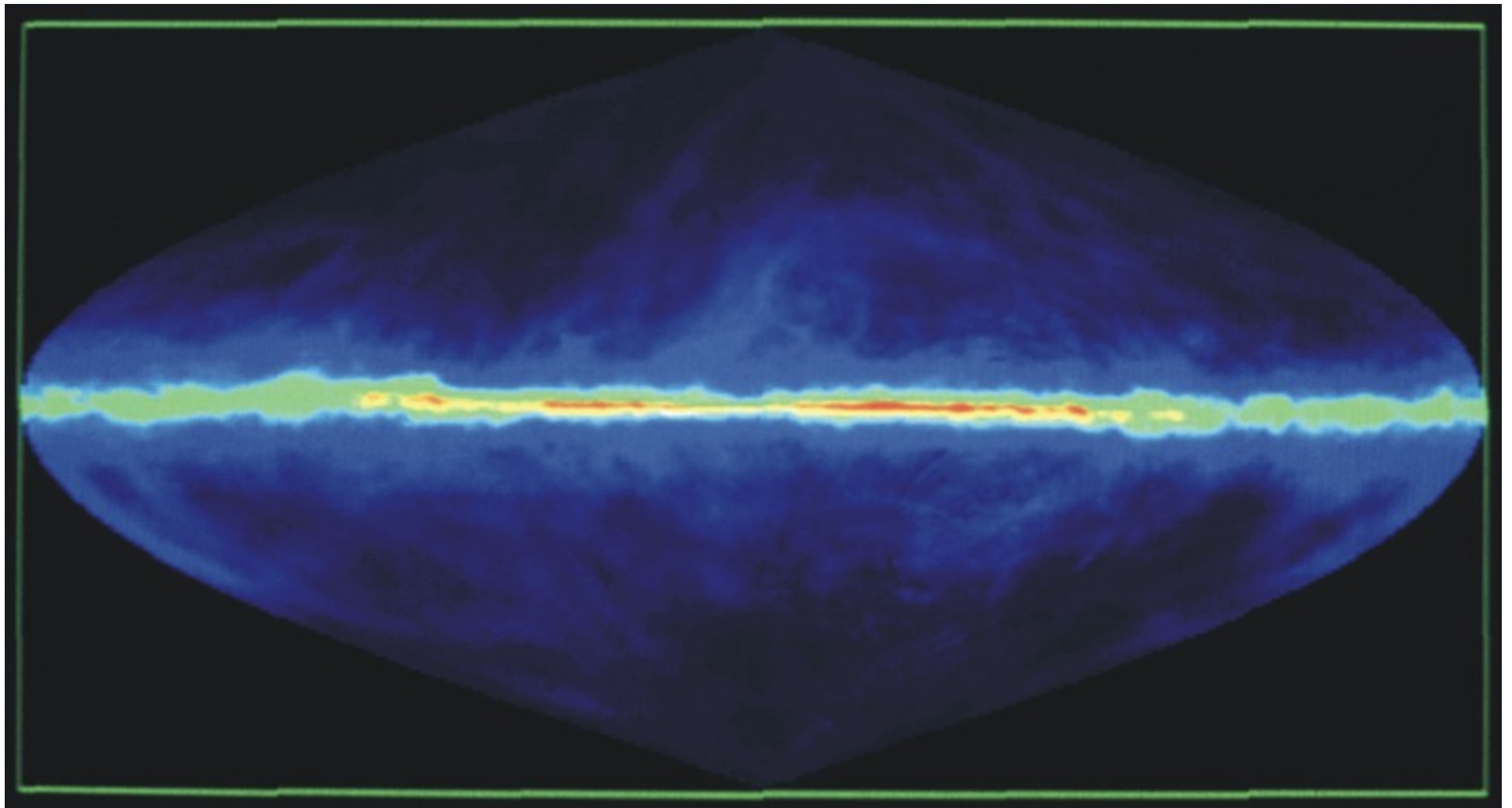
**NRAO image gallery:**

**<http://www.nrao.edu/imagegallery/php/level1.php>**

**An HI Rogues' Gallery**

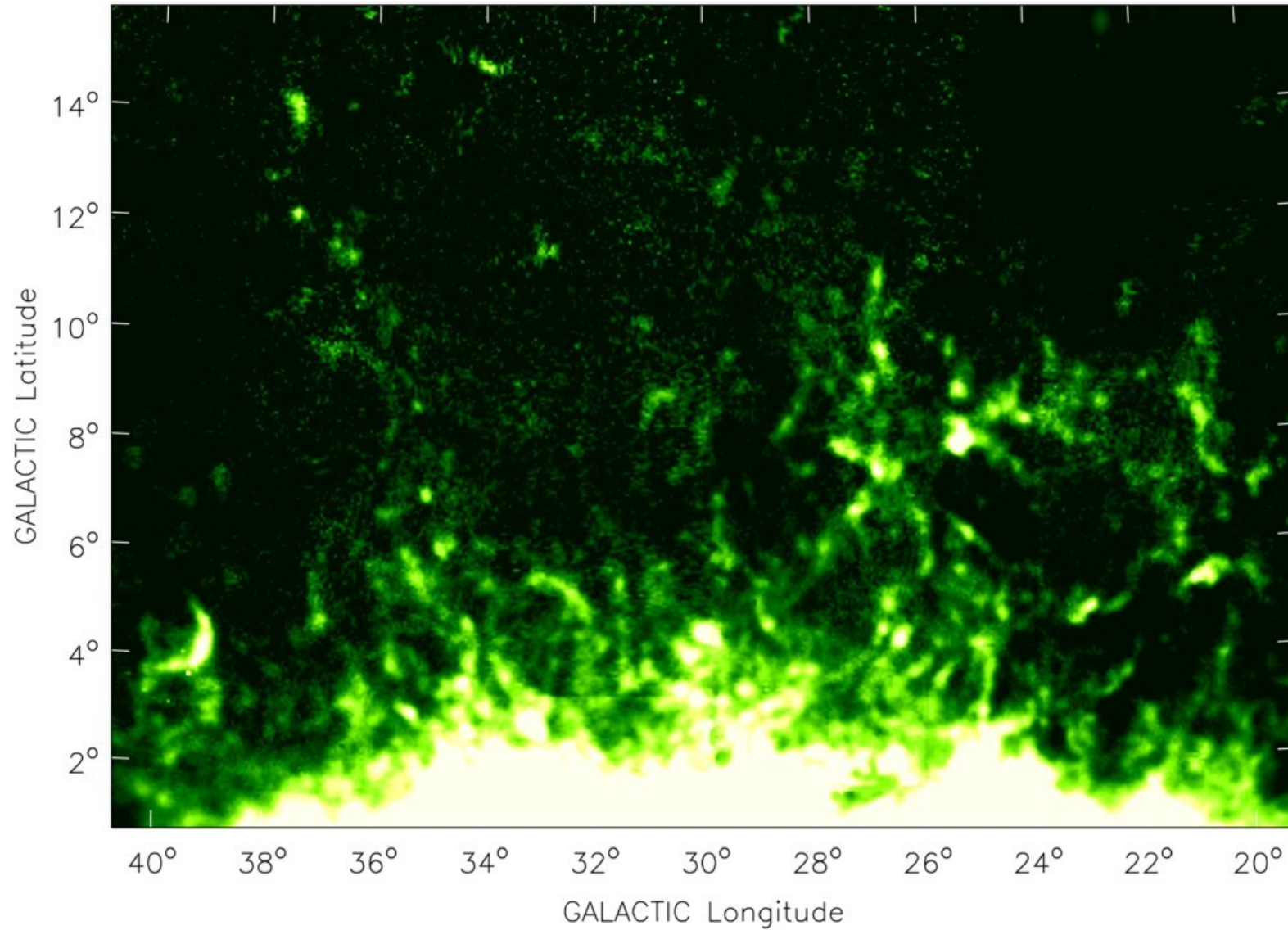
**(Hibbard, van Gorkom, Rupen, & Schiminovich 2000):**

**<http://www.nrao.edu/astrores/HIrogues/>**



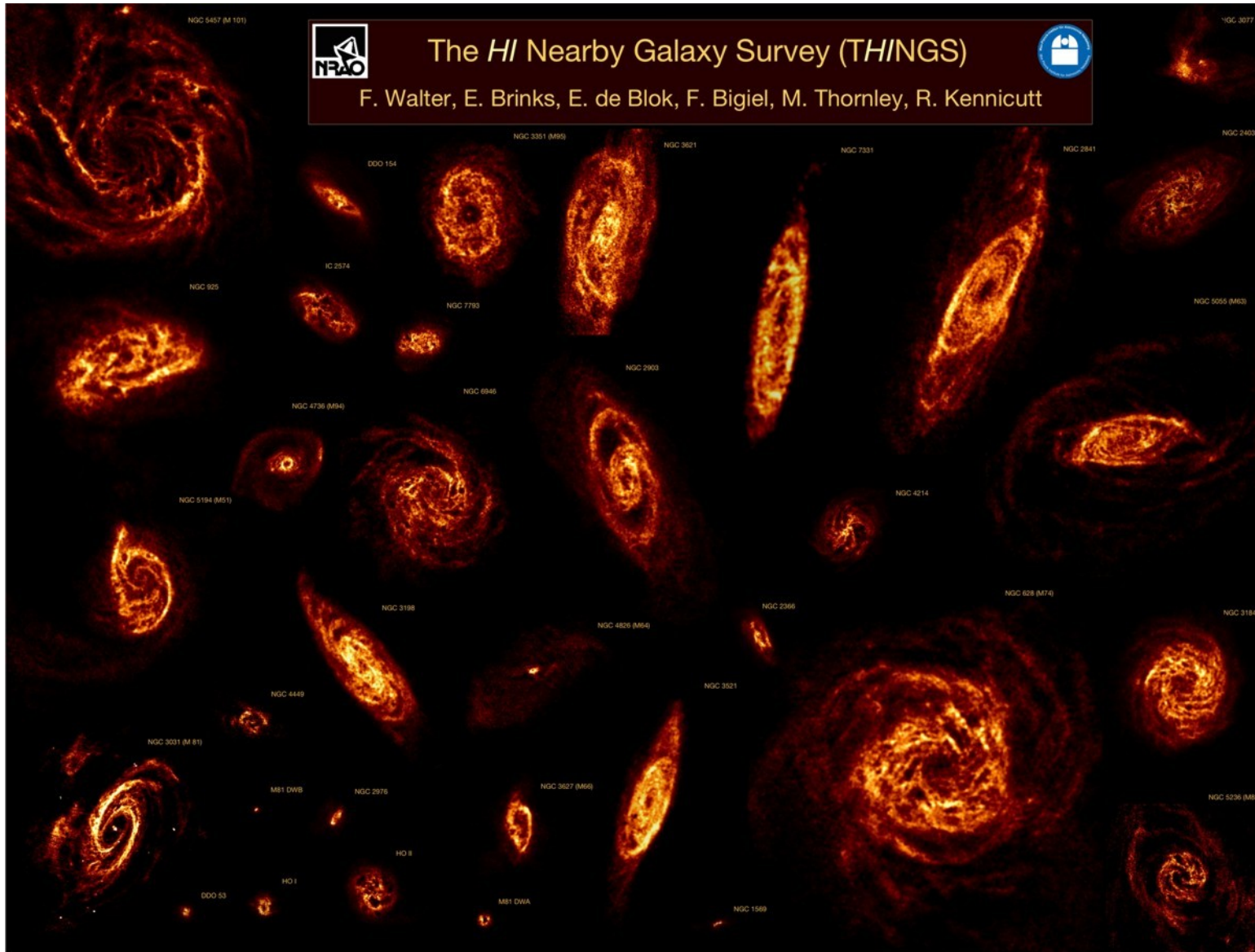
**HI in the Milky Way, plotted in  $(l, b)$  coordinates**

**J. M. Dickey & F. J. Lockman**

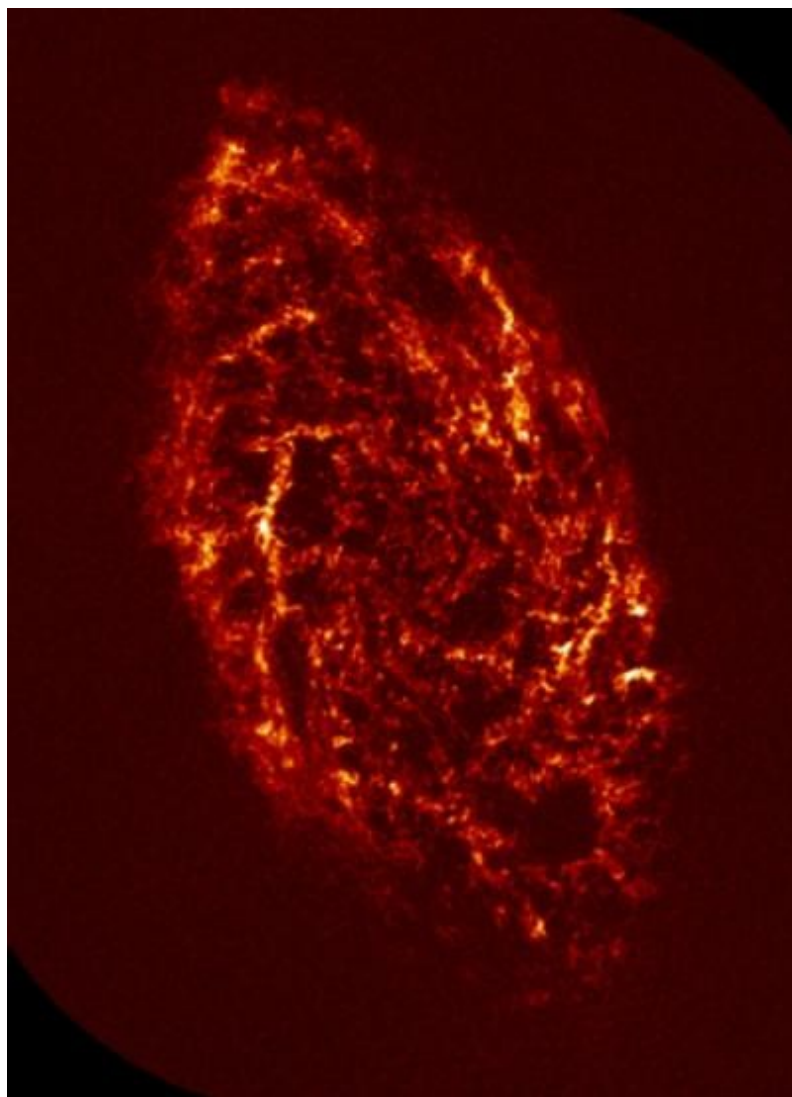


**HI in the Milky Way halo ( $z \sim 2$  kpc); field's total  $M_{\text{HI}} \sim 10^6 M_{\odot}$**

**Y. Pidopryhora, F. J. Lockman, & J. Shields**



**HI in nearby, normal galaxies**



**HI in M33 (very nearby spiral)**

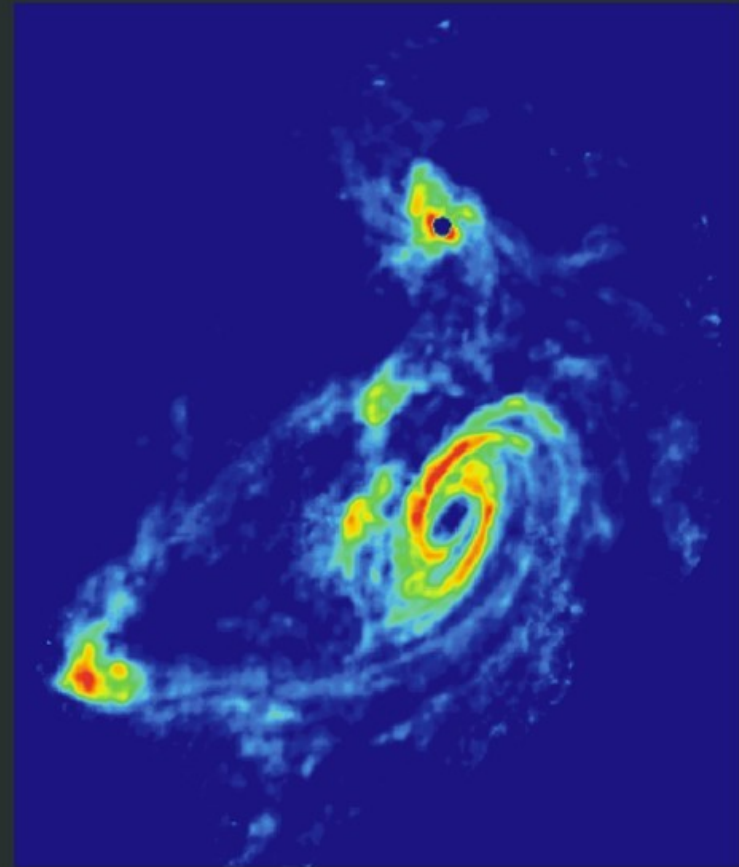
**D. Thilker, R. Braun, & R. Walterbos**

## TIDAL INTERACTIONS IN M81 GROUP

Stellar Light Distribution

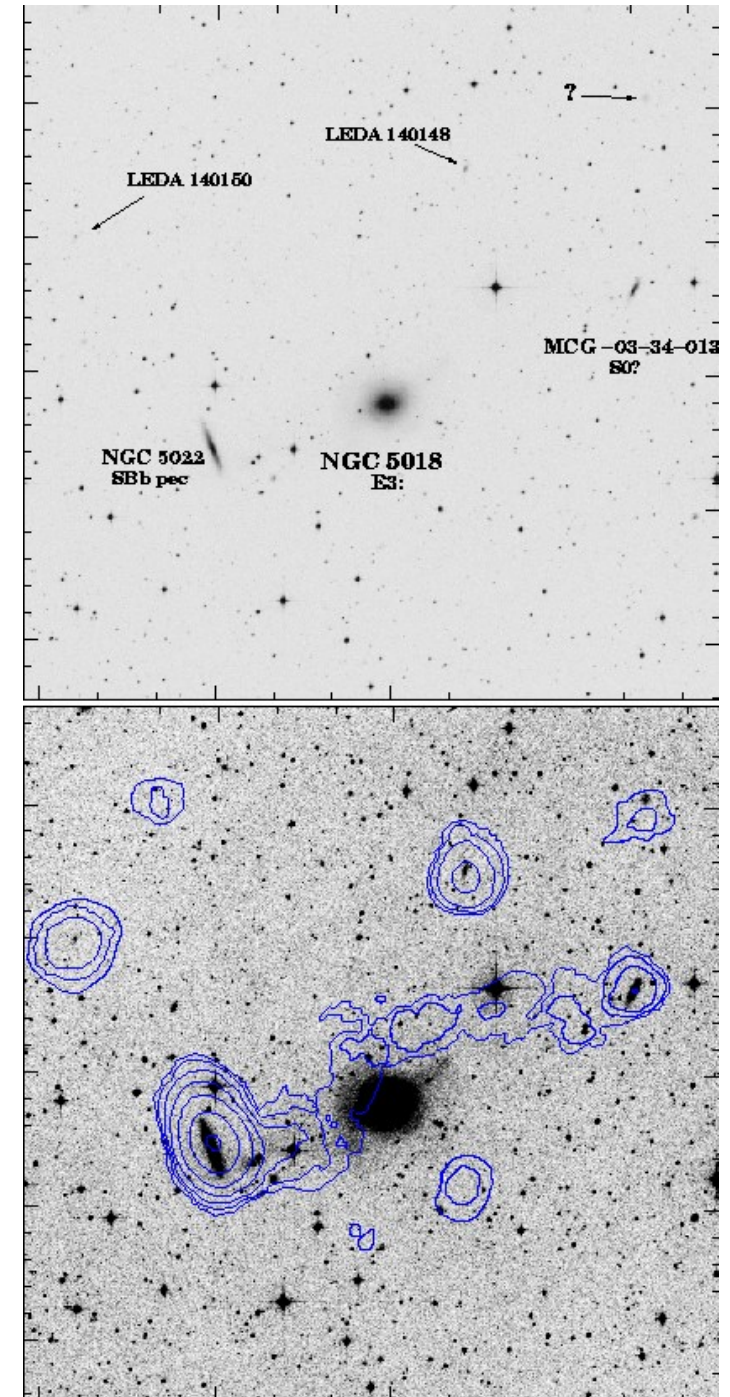
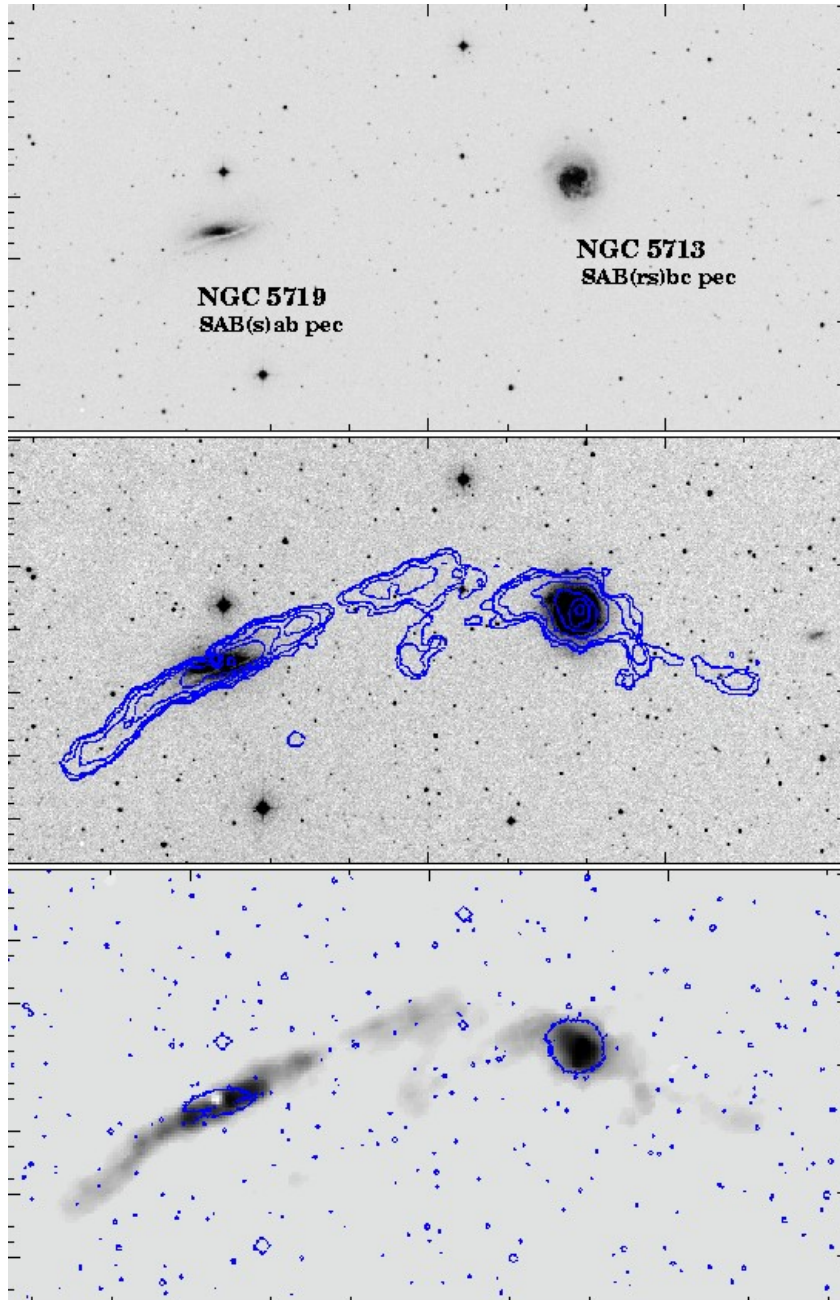


21 cm HI Distribution

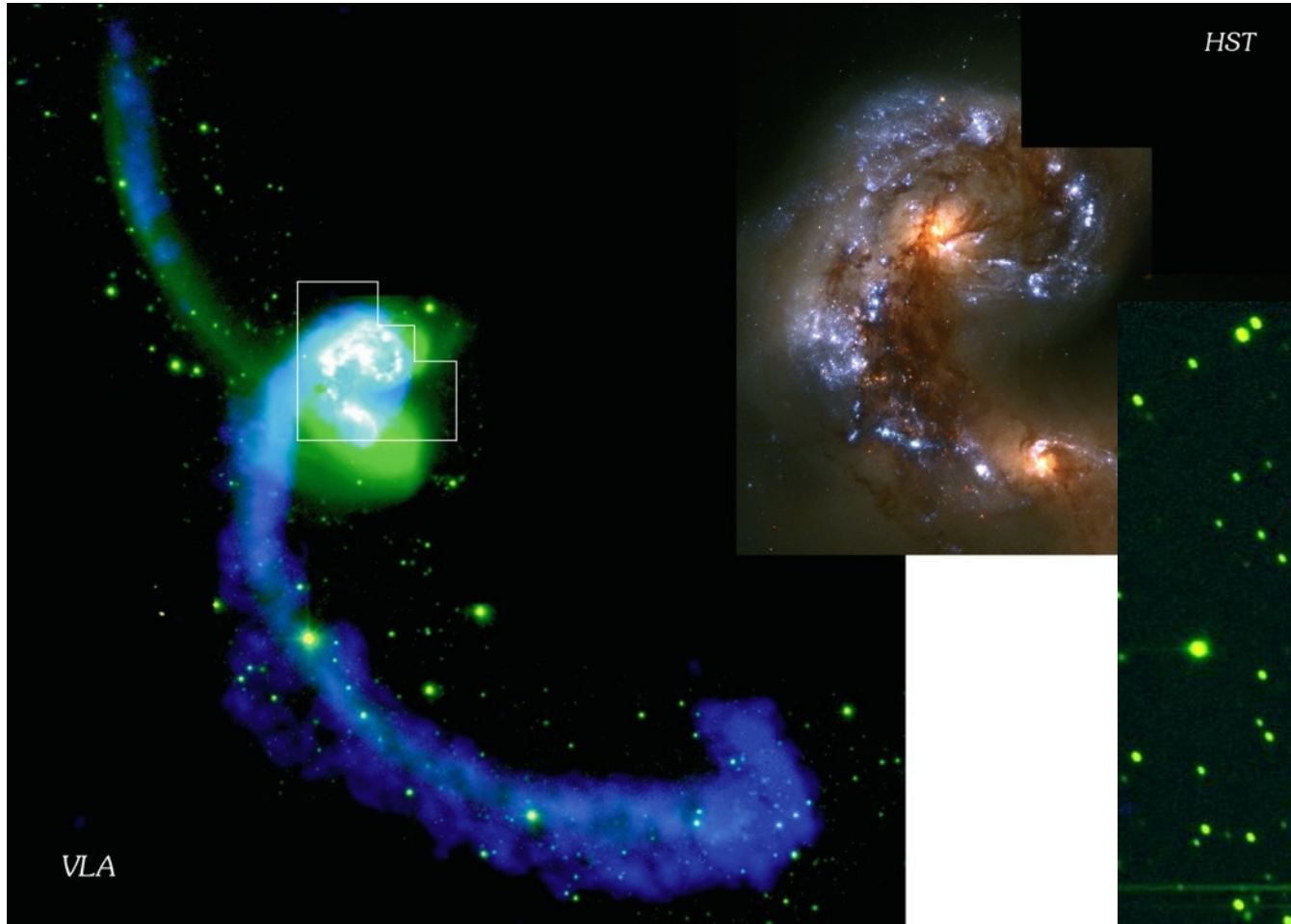


**HI in common envelope for the M81 galaxy group**

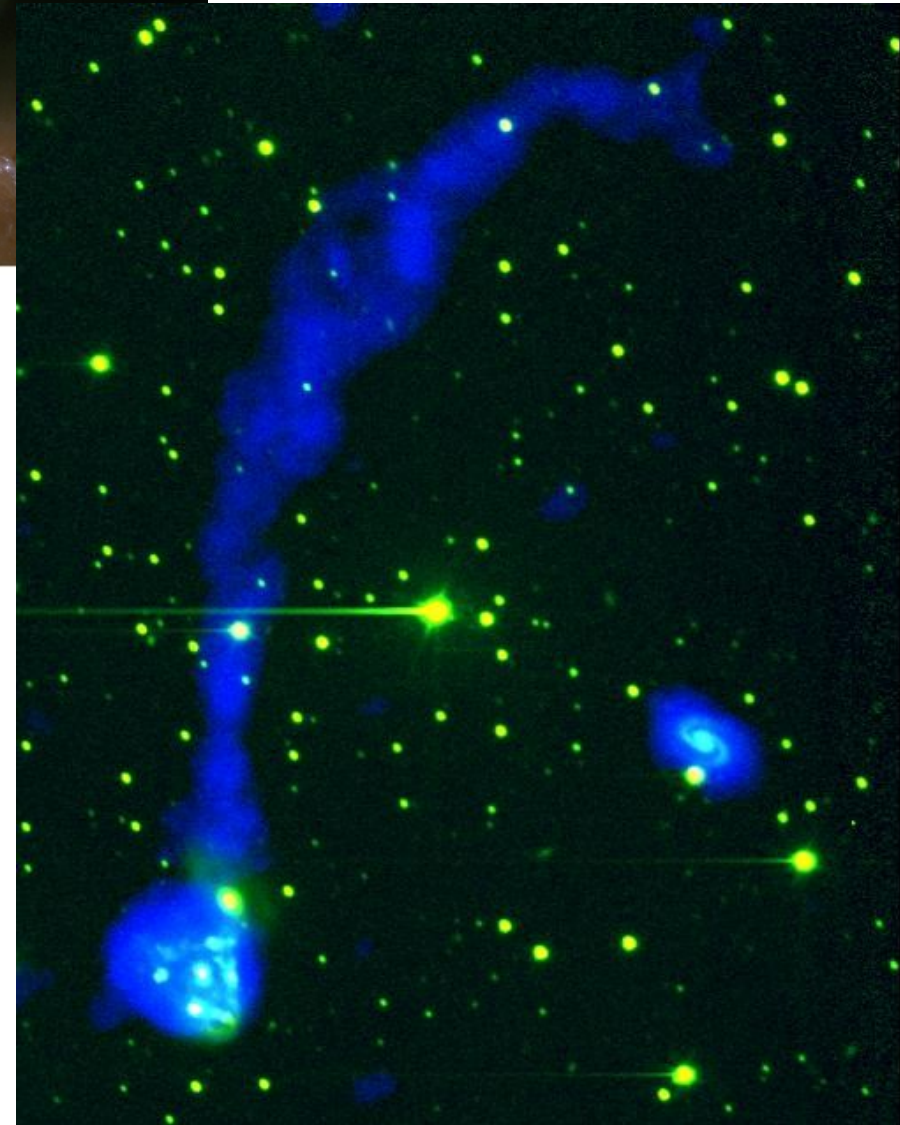
**M. S. Yun, P. T. P. Ho, & K. Y. Lo**



**HI in current or past interacting systems**

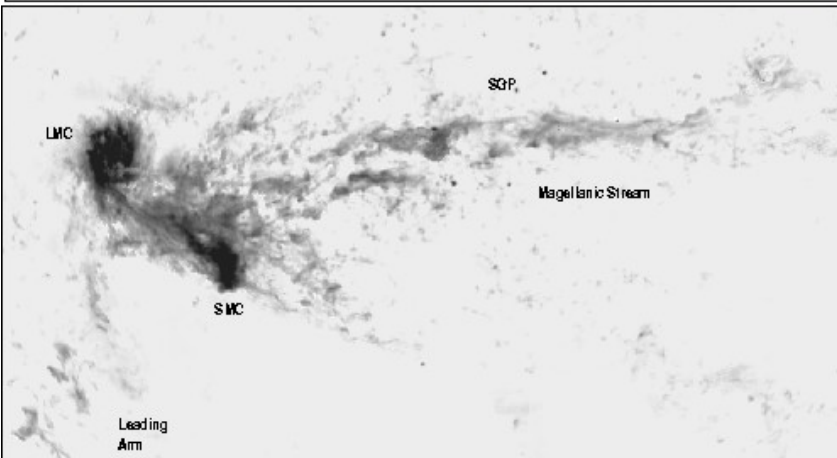
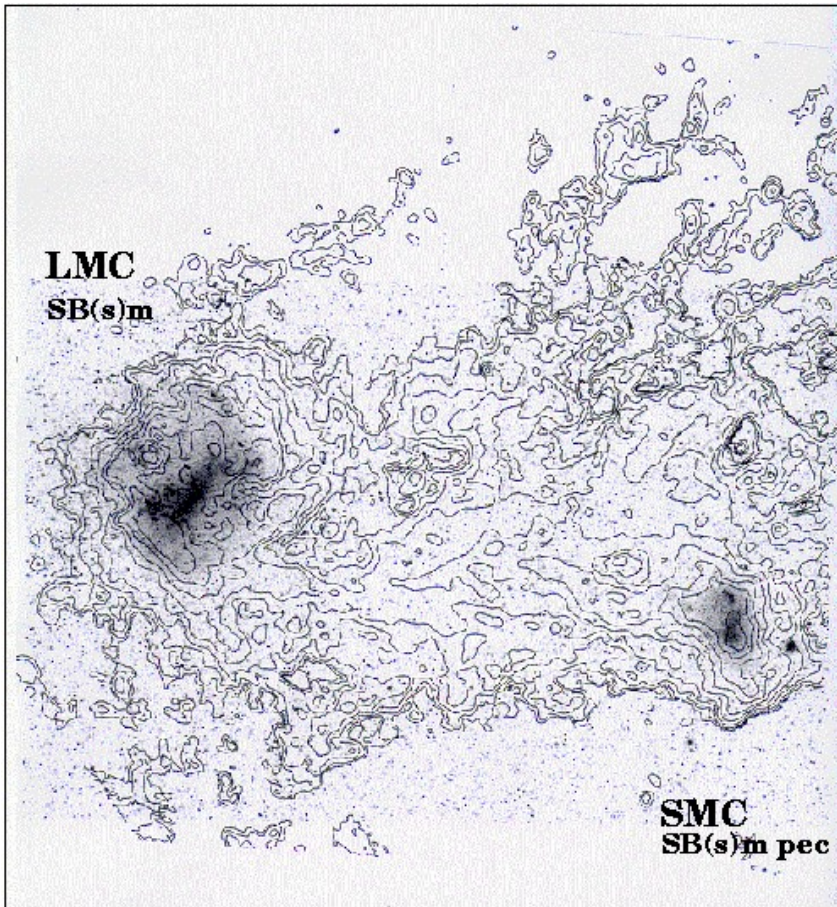


**J. E. Hibbard et al.**

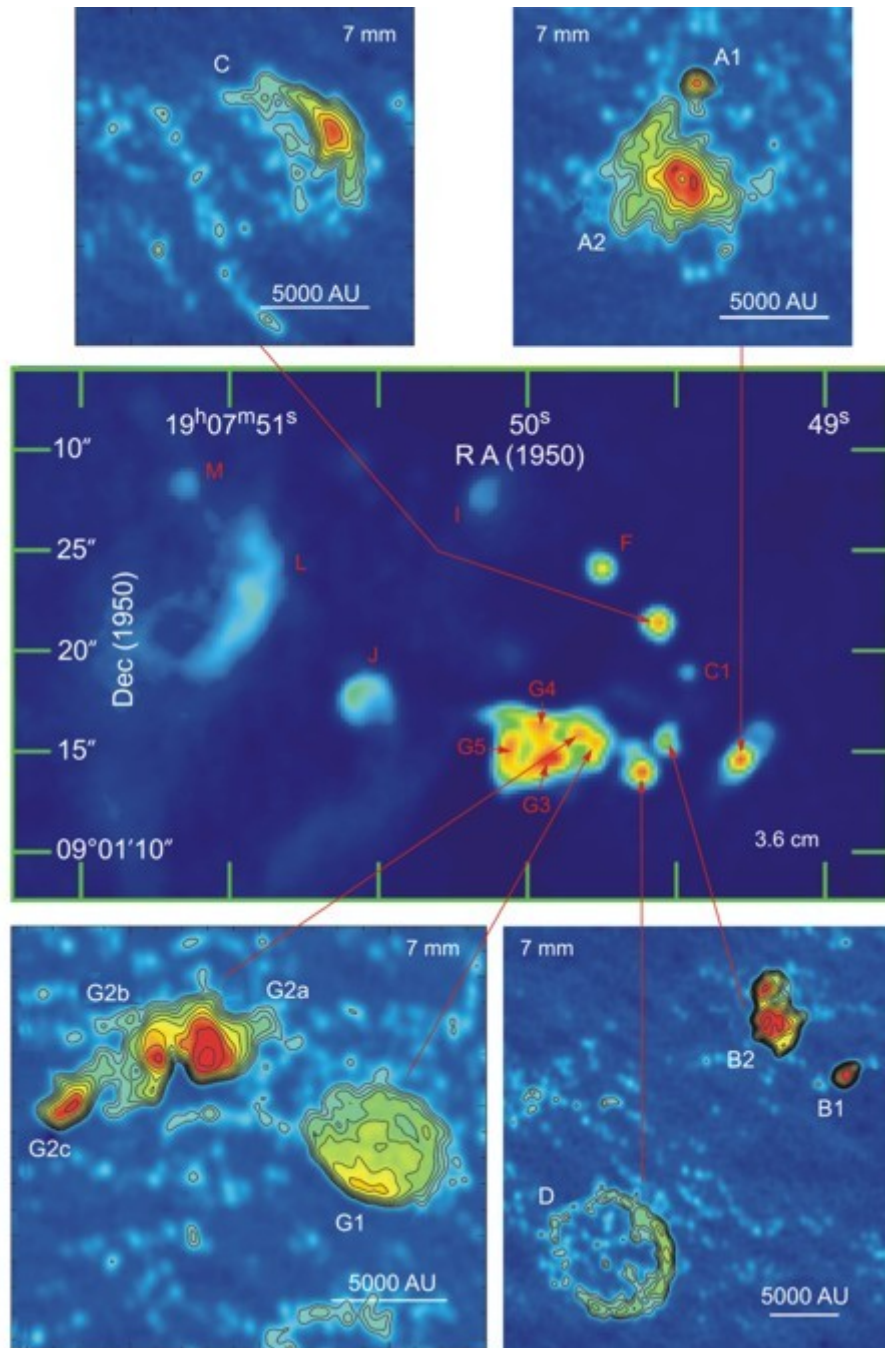


**gas+stellar tails imply tidal (gravity)  
gas-only tails imply ram-pressure  
stripping**





**Magellanic Stream is being ripped out of Large & Small Magellanic Clouds by hot gas in halo of Milky Way.**



**Free-free emission from young,  
“ultracompact” (high- $n_e$ )**

**HII regions in Milky Way:**

**middle = 3.6cm, insets = 7mm**

**C. DePree, M. Goss, J. Welch,  
& D. Wilner**